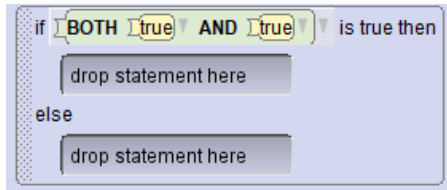


# CompSci 94

## Logic with Ifs, Nested Ifs

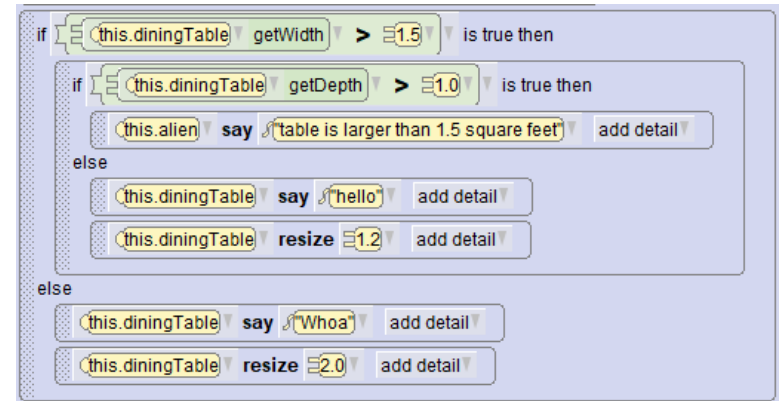
September 26, 2019



Prof. Susan Rodger

## Review Nested IF

- What happens if the diningTable has width 1.7 and depth 1.0?



## Logic Review

- What are possible values of A and B
  - if **A and B** is True?
  - if **A or B** is True?
  - if **A or B** is False?

## Logic Truth Table

A	B	not A	A and B	A or B
True	True	False	True	True
True	False	False	False	True
False	True	True	False	True
False	False	True	False	False

## Logic Truth Table

A AND B is **true** only if both A and B are **true**

A	B	not A	A and B	A or B
True	True	False	True	True
True	False	False	False	True
False	True	True	False	True
False	False	True	False	False

## Logic Truth Table

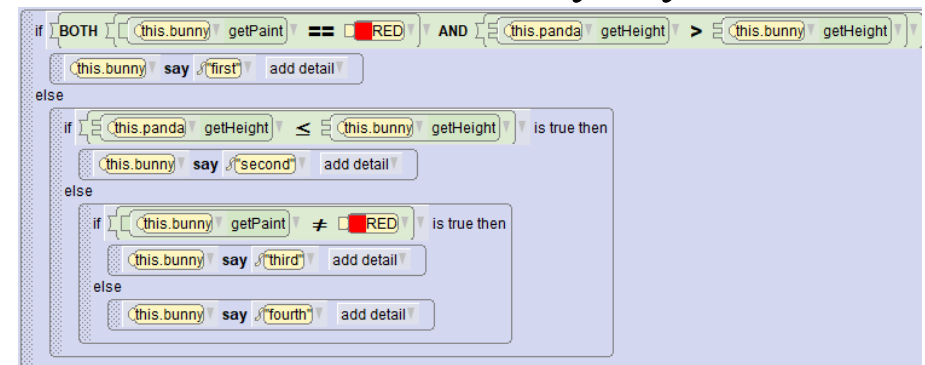
A OR B is **false** only if both A and B are **false**

A	B	not A	A and B	A or B
True	True	False	True	True
True	False	False	False	True
False	True	True	False	True
False	False	True	False	False

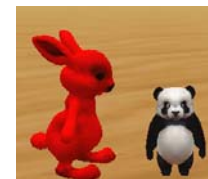
Consider this code – Nested Ifs  
How would you write it with ONE IF?



What does bunny say?



Bunny is red  
to start.



## Bunny different. What does bunny say?



Bunny is green to start.



CompSci 94 Fall 2019

13

## Give an example to make bunny say fourth



CompSci 94 Fall 2019

15

## Announcements

- Assignment 3 due Tuesday night
- RQ and Videos due Tuesday 8:30am
- Exam 1 in two weeks, review next Thursday

CompSci 94 Fall 2019

18

## Class Today

- Nested Ifs, Logic – and/or/not



CompSci 94 Fall 2019

19