

COMPUTER SCIENCE 101

WORK LOAD

QUIZZES
LECTURES
WOTOS
LABS
ASSIGNMENTS
APTS
EXAMS



APT CODE

```
DEF CALCULATE(FOOD1, FOOD2, FOOD3):  
    FOOD1 = FOOD1.SPLIT(" ")  
    FOOD2 = FOOD2.SPLIT(" ")  
    FOOD3 = FOOD3.SPLIT(" ")  
    NEWLIST = []  
    FOR FOOD IN FOOD1:  
        IF FOOD IN FOOD2:  
            IF FOOD NOT IN FOOD3:  
                NEWLIST.APPEND(FOOD)  
    ELSE:  
        IF FOOD IN FOOD3:  
            NEWLIST.APPEND(FOOD)  
    FOR FOOD IN FOOD2:  
        IF FOOD NOT IN FOOD1 AND FOOD IN FOOD3:  
            NEWLIST.APPEND(FOOD)  
    SET1 = SET(NEWLIST)  
    NEWLIST = LIST(SET1)  
    NEWLIST = SORTED(NEWLIST)  
    NEWLIST = (" ").JOIN(NEWLIST)  
    RETURN NEWLIST
```



```
IF __NAME__ == '__MAIN__':  
    PRINT(CALCULATE("BANANA  
    APPLE KIWI", "KIWI APPLE KIWI  
    PLUM", "MANGO APPLESAUCE  
    PLUMSAUCE BANANA"))
```

FOR
YUMMYFOOD.PY

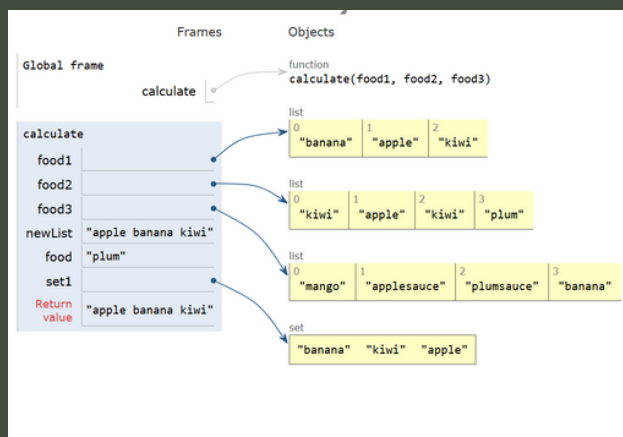
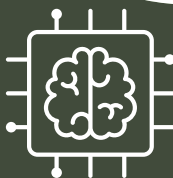
IN COMP SCI,
BREAK PROBLEMS INTO
SMALLER PROBLEMS TO
MAKE THEM EASIER.
COMP SCI IS ALL ABOUT
PROBLEM SOLVING!



PYTHON TUTOR

DIAGRAM

FOR YUMMYFOOD.PY



IMPORTANT TERMS

ALGORITHM

A GENERAL STEP BY STEP PROCESS
FOR SOLVING A PROBLEM.

DEBUGGING

THE PROCESS OF FINDING AND
REMOVING ANY OF THE THREE KINDS
OF PROGRAMMING ERRORS.

ERRORS

ISSUES WITH THE CODE THAT THE
CODE CAN NOT RUN DUE TO.

TYPE

THE TYPE OF A VALUE DETERMINES HOW IT CAN BE
USED IN EXPRESSIONS. EITHER INT, STR, OR FLOAT.

VARIABLE

A NAME THAT REFERS TO A STORED VALUE.

LOOP

GOING THROUGH THE CONTENTS OF CODE UNTIL THE
CONDITION IS NO LONGER MET.

TURTLE

A DATA OBJECT USED TO CREATE PICTURES (KNOWN AS
TURTLE GRAPHICS).

LISTS, SETS, DICTIONARIES

ALL STORE INFORMATION. SETS ARE LIKE A LIST
WITHOUT POSSIBLE REPEATING VALUES, DICTIONARY
CORRESPOND A VALUE TO A KEY.



Sec 1 with Prof Rodger